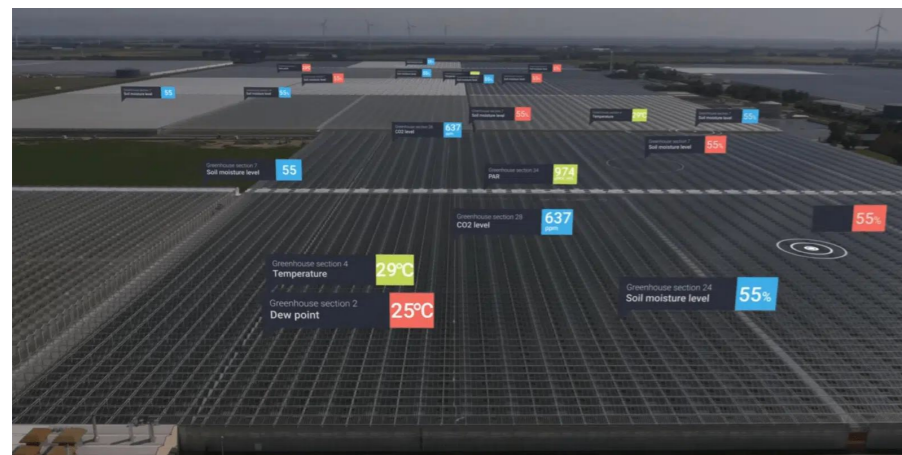


## Digital Twin

### Working together on the successful digitalization of operations

Digital twins are a big focus for the future of agriculture. By integrating greenhouse data, you enable real-time monitoring & feedback, paving the way for advanced analyses and simulations that elevate growing practices.



We are always seeking collaborations to further shape the digital twin. Currently 30MHz offers the following types of digital twin partnerships:

- **Whitelabel platform**

Supercharge your offering with a market-leading data platform. Save big time on the investment and speed up time to market.

- **Data projects**

Looking to connect all kinds of data sources? Or perform in depth analyses? Get the most out of your data and turn it into useful information.

- **Custom development**

Do you have a complex software challenge? Partner up and leverage our digital twin building blocks to accelerate your innovation.

## Collaborate?



 <p><b>Lars</b> l.vanderlely@30mhz.com</p>	 <p><b>Sharon</b> s.vrieling@30mhz.com</p>
 <p><b>Tessa</b> t.ridderikhoff@30mhz.com</p>	 <p><b>Jasper</b> j.vanderauwaert@30mhz.com</p>



## Digital twin partner

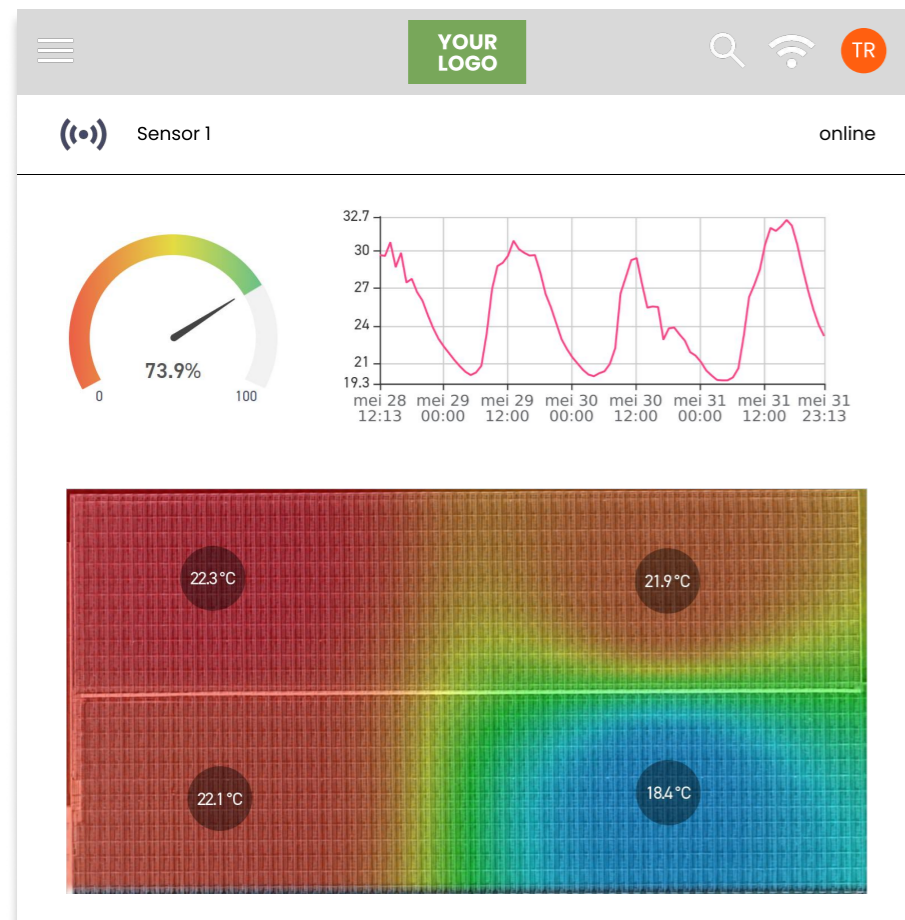


[www.30mhz.com](http://www.30mhz.com)



## Whitelabel platform

We offer a professional custom branded software to serve your clients. Save large investments and significantly reduce your time to market.



**Easily connect your data, manage your client base, use all platform functionalities and connect to other relevant greenhouse data - with 0 development required**

### Why?

- ✓ Save large investments
- ✓ Reduce your time to market to 1 month
- ✓ Don't worry about hiring scarce software developers
- ✓ Features built for agriculture
- ✓ Allow custom branding
- ✓ Connect with other relevant greenhouse data

## Data project

Maximize the value of your data. **Seamlessly connect all your greenhouse data and convert them into growing actions and strategies.** Get expert help integrating data for efficient, ISO27001-compliant operations.

### 1. Data integration

If you have additional data sources, bringing this together with your other climate data can provide important new insights. 30MHz can help you set up such an (automated) integration into the platform.



### 2. Connect to a custom environment

Whether you need to connect with another data platform or establish automated systems for controlling climate computers, irrigation, and other greenhouse operations using real-time data, 30MHz provides the expertise you need.



### 3. Custom project

Our data and AI experts provide customized agricultural solutions to ensure you get the most out of your data. This can include data analysis, predictive modeling, and greenhouse automation, using data from any source.

## Custom development

Do you have more complex requirements and a need for custom development? 30MHz offers the digital twin **building blocks to quickly bring a high-quality software product to market**, reducing your timeline and budget requirements.

### Select the features for your ideal product

- ✓ Uptime guarantee
- ✓ Weather data
- ✓ Export API
- ✓ Ingest API
- ✓ Maintenance
- ✓ Cloud optimization
- ✓ Custom alerts
- ✓ Tailored dashboarding
- ✓ Communication feed
- ✓ Advanced export
- ✓ Safe sharing
- ✓ Data imports
- ✓ User management
- ✓ Data integrations
- ✓ Device management
- ✓ Custom branding

These building blocks can be used to cost-effectively create a standalone product, or a custom application integrated within the 30MHz dashboard.

*Example: this extended version of the platform allows the integration of water-, soil- and nutrient sample analyses to be integrated with the climate data.*

#### 501: Potting soil analysis

Date	Ph	NH4 mmol/l	K mmol/l	Na mmol/l	Ca mmol/l
04-05-2020	5,8	0,7	1,6	0,2	2,4
11-05-2020	5,7	0,9	1,3	0,2	2,5

